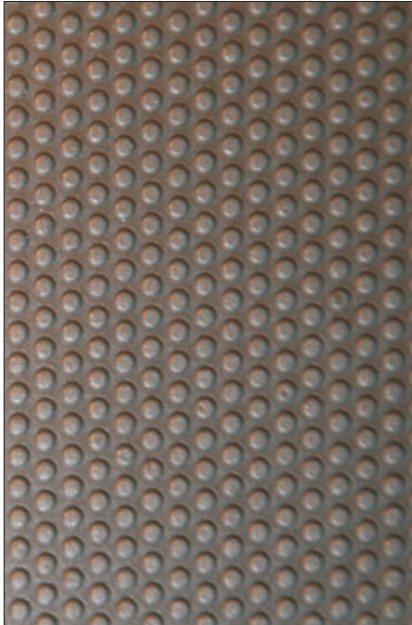


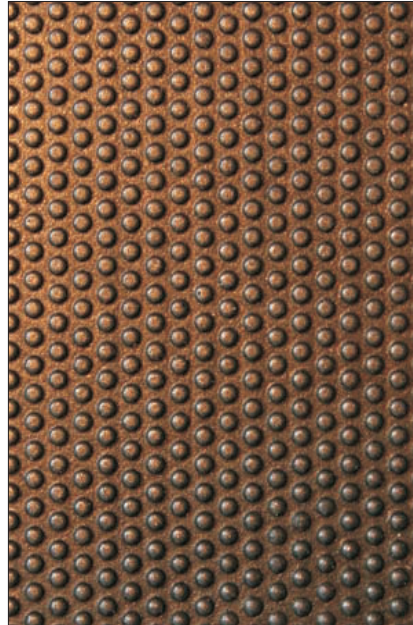
enzie Space Saving Stairs Pty. Ltd.
 287 Arthur Street
 Fairfield, Victoria
 Australia, 3078
 Ph. +61 3 9481 2255
 Fax +61 3 9481 8919
 ACN: 126 788 118
www.enzie.com.au

enzie
spiral
 staircases

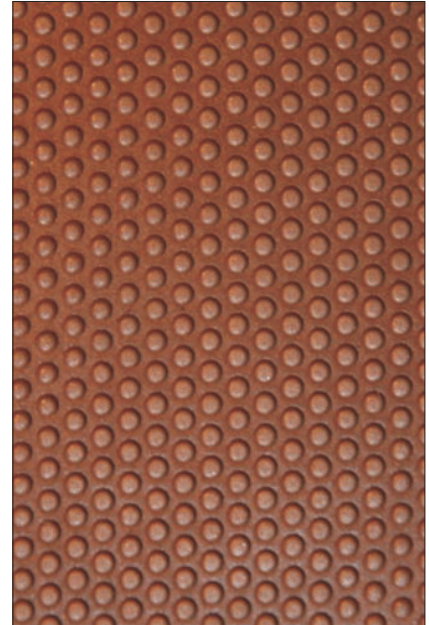
STANDARD DETAIL



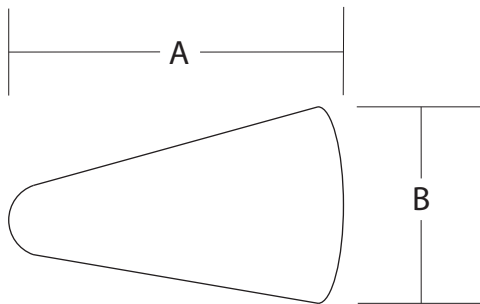
Gray



Black



Brown



To Suit	A	B	Description
Landing	750 mm	450 mm	Rectangular sheet
Landing tile	225 mm	225 mm	Square tile
1070 & 1300	435 mm	280 mm	Small
1500	535 mm	290 mm	Medium
1750 & 1880	665 mm	295 mm	Large
Timber tread	19*2mm	19 mm	Round

enzie[®] tread pads are made from 3 mm thick EVA material which gives a soft safe surface to walk on. It is supplied cut to size with ready to use self stick adhesive, just throughly clean surface and dry surface. Place material 3 mm from the edge of the step.

