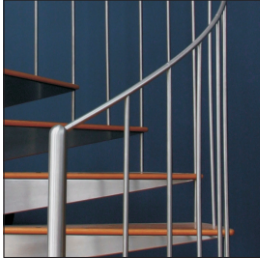


H SERIES FACT SHEET

HANDRAIL



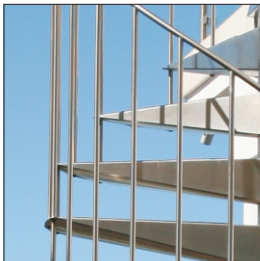
MATERIAL:

- 19 mm Steel

FINISH:

- Powder-coated Steel
- Tropical Finish Powder-coated Steel
- Galvanised Powder-coated Steel
- Stainless Steel (304 or 316)

BALUSTRADE



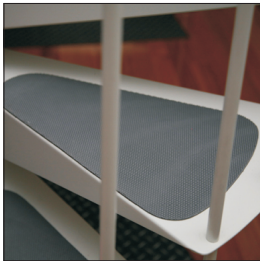
MATERIAL:

- 16 mm Steel

FINISH:

- Powder-coated Steel
- Tropical Finish Powder-coated Steel
- Galvanised Powder-coated Steel
- Stainless Steel (304 or 316)

TREADPADS



INTERNAL STAIRS MATERIAL:

- 3 mm EVA Rubber

FINISH: Black, Grey, or Brown

EXTERNAL STAIRS MATERIAL:

- 3 mm Comcork

FINISH: Black, Grey, or Brown

TIMBER OVERLAYS



DESIGN:

- 19 mm Timber with non-slip nosing

MATERIAL:

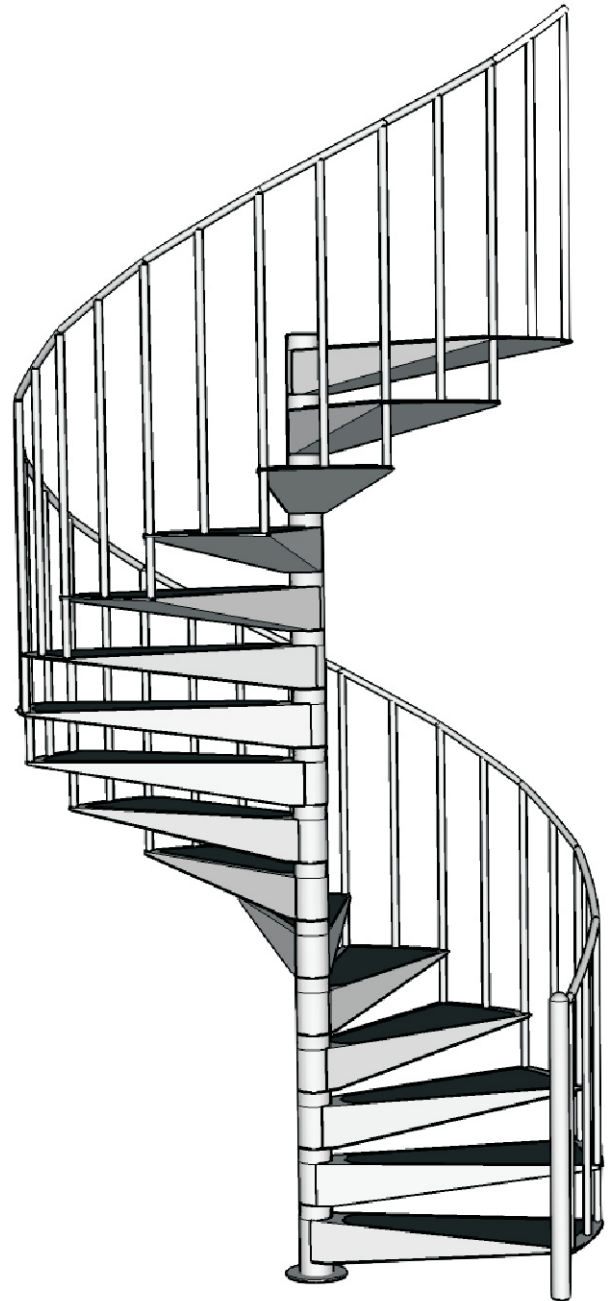
- Your choice of Australian Timbers

COLOURS



POWDER-COATED

- Powder-coated available in your choice of 22 standard colours. Custom colours are also available.



Stairwell Diameter (mm)	1300	1500	1750	1880
No. of steps to the circle	12	14	16	16
The going (degrees)	30	25.7	22.5	22.5
Riser height	205-220	205-220	178-190	178-190